
71 % OF  **OUR**
IS COVERED BY **WATER.**
WE WANT EVERYONE TO
MAKE THE MOST OF IT.



SEAKEEPER INC.

Corporate Headquarters
+1-410-326-1590
45310 Abell House Lane, Suite 350
California, MD 20619

Technical Support 24/7 Hotline
+1-240-718-6440

seakeeper.com

©2019 Seakeeper Inc.
Recreational Brochure - 90526-1





IT DOES WHAT?

That's right, Seakeeper eliminates up to 95% of boat roll. Gone are the days of seasick guests, sea legs and spilled drinks. Seakeeper ensures every day on the boat is a comfortable one.

ELIMINATE BOAT ROLL.

Azimut 51 Atlantis with a Seakeeper 6



OFTEN IMITATED, NEVER DUPLICATED

We are experts in marine stabilization, and it's not just one of many things we do—it's the only thing we do.

We are focused solely on making everyone's time on the water safer and more enjoyable. Whether you have a small boat or a mega-yacht, Seakeeper is the only true stabilization choice.

STABILIZATION FOR SMALLER BOATS

From day one our focus has been on making stabilization a reality for every boater. Now, boats as small as 27 feet (8 meters) can have the stabilizing power of Seakeeper. And rest assured, we won't stop there!



Sea Hunt Gamefish 30 with a Seakeeper 2



**SMALLER
BOATS
NEED A
SMALLER
SEAKEEPER
WITH A
SMALLER
PRICE**



Visit seakeeper.com/performance to view the full library of sea trials and database of boats we have already stabilized.



Tiara Sport 34 LS
with a Seakeeper 2

REFITS

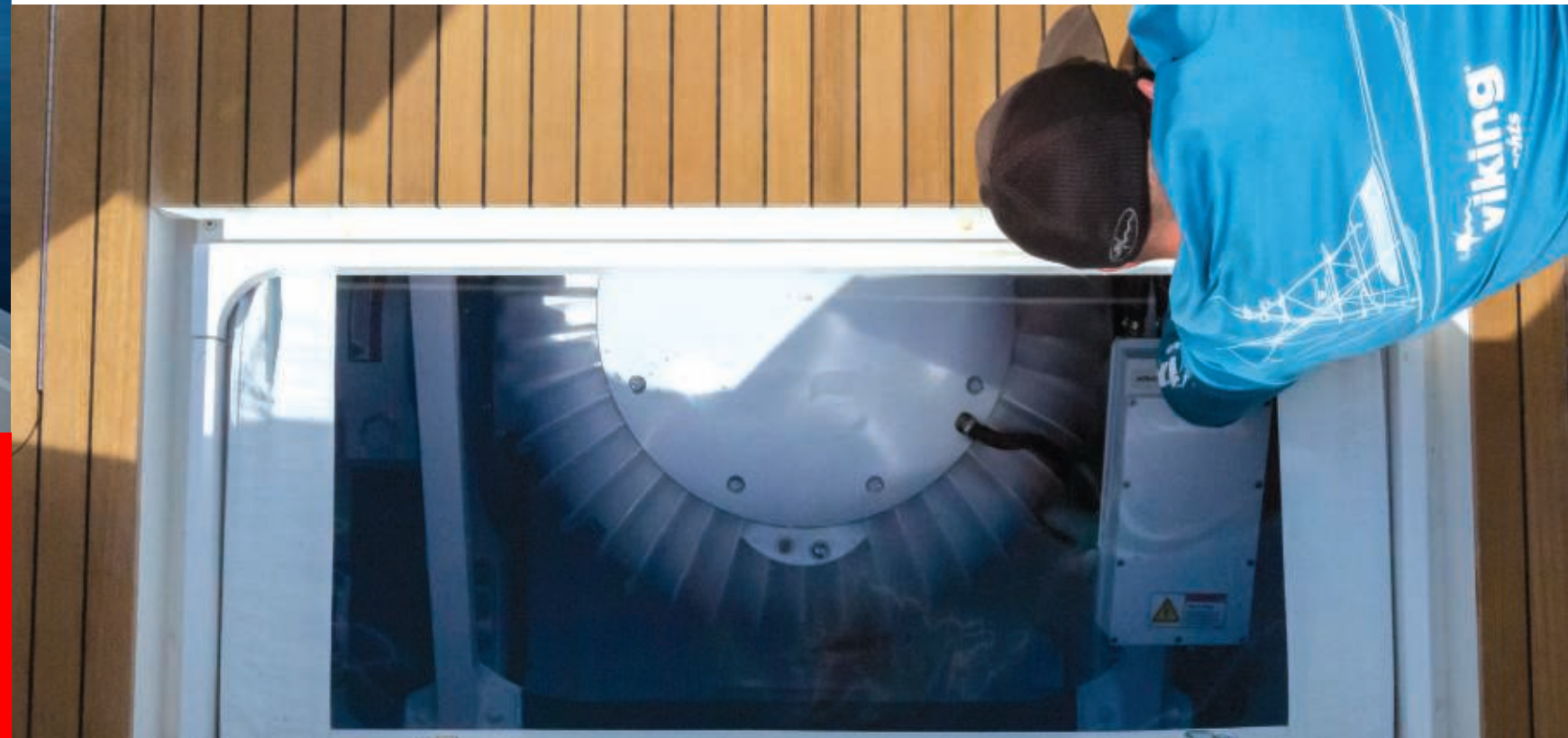
HAVE AN EXISTING BOAT?

If you're not in the market for a new boat, you can still have the latest technology available. With more than 2,500 refits under our belt, we can confidently say that most boats can be refit with a Seakeeper! They can fit anywhere there is available space, and don't need to be installed on the centerline. View the database of refits we have already performed at seakeeper.com/refit.

NEW BUILD

BUYING A NEW BOAT?

As Seakeeper becomes a must-have item on all boats, more and more manufacturers are installing them at the factory every day. New boat owners now have the benefit of thoughtful installation right from the boat's initial design. View the complete list of builders offering Seakeeper at seakeeper.com/standard.



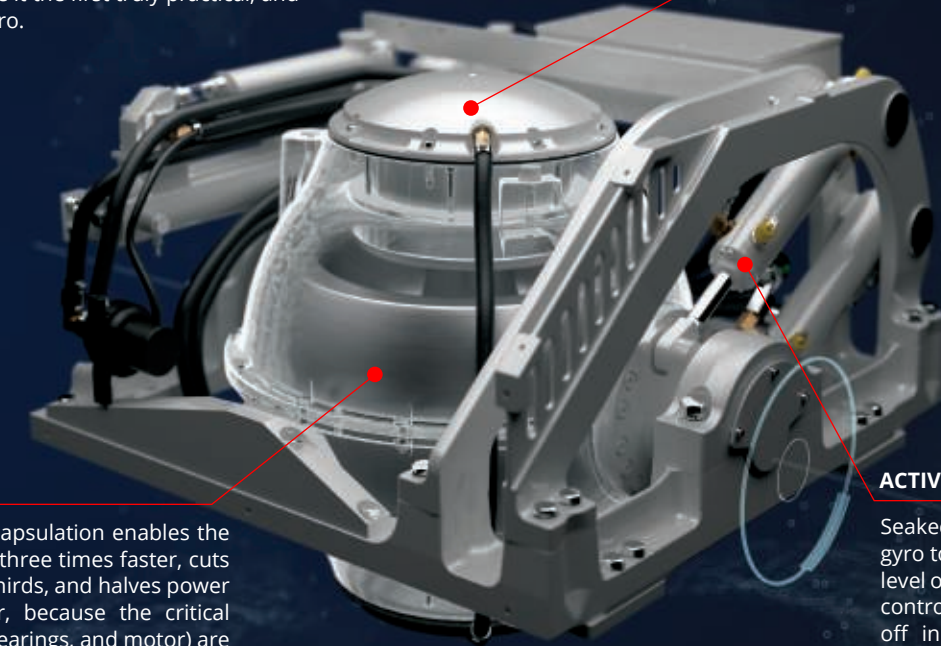
HOW IT WORKS

Inside a vacuum encapsulation, a flywheel spins at speeds of up to 9,700 rpm. When the boat rolls, the sphere tilts fore and aft (precesses), producing a powerful gyroscopic torque to port and starboard that counteracts the boat roll.



BUILT TO PERFORM

The Seakeeper is designed to virtually eliminate boat roll on vessels 27 feet and up. It requires modest electrical power, has no outside appendages, and can be installed virtually anywhere on board. Its computerized control and vacuum technology make it the first truly practical, and only modern, anti-roll gyro.



INNOVATIVE COOLING SYSTEM

Patented cooling system enables the flywheel to spin at high speeds inside of the vacuum containment.

VACUUM SEALED

Seakeeper's vacuum encapsulation enables the flywheel to spin roughly three times faster, cuts flywheel weight by two-thirds, and halves power requirements. Moreover, because the critical components (flywheel, bearings, and motor) are sealed in a vacuum, they are forever isolated from the marine environment.

ACTIVE CONTROL

Seakeeper's active control optimizes gyro torque, providing an unsurpassed level of performance. Unlike a passively controlled gyro, which must be turned off in the roughest conditions and/or at higher speeds, the Seakeeper is effective at all speeds and can be used in all sea conditions.

CAN WE STABILIZE ANY BOAT? HULL YEAH, WE CAN.



LEISURE

Kick back, enjoy the wind in your hair and shake up an evening cocktail—Seakeeper makes your cruise comfortable.



COMMERCIAL

What happens when your crew can safely spend more time on the water and go out when others can't? More success and more profit.



FISHING

From tournaments to family time, backing down on the big one or reeling in dinner, there's a Seakeeper for your center console or sportfish boat.



YACHT

Ultimate luxury deserves the best in stabilization. Your guests will notice there's something special about your yacht. And there's one for your tender, too.

AND JUST IN CASE YOU'RE WONDERING...



LIGHTWEIGHT

Seakeeper weighs a small fraction of the vessel displacement.



LOW POWER CONSUMPTION

Due to its vacuum encapsulation, Seakeeper requires minimal power. Select Seakeeper models even run off 12V DC power.



QUICK & SIMPLE INSTALL

Can be installed in as little as 1-3 weeks. For smaller boats, a unique leaning post design enables a retrofit to be done in a matter of days!



FLEXIBLE

It can be installed virtually anywhere on the boat and any combination of units can be used to reach targeted performance.



INCREASED RESALE VALUE

Boats with a Seakeeper resell faster, and for more money, than boats without.



INTERNAL

No external appendages and completely self-contained, which means no drag and no hull modifications.



NEVER TURN IT OFF

Thanks to the smart technology of active control, it can be used at rest and underway in all sea conditions.



QUIET

With all Seakeeper models operating between 68 and 75 dCB, you won't be bothered by any noise.

INTUITIVE DASHBOARD DISPLAY

An intuitive operator interface allows you to simply turn it on and forget about it. There are no complex settings or adjustments for the operator. Seakeeper does all of this automatically, you simply enjoy. With the option to use our 5-inch display or integrate with your current electronics, make your helm, your own.



EXTREMELY SMALL

A Seakeeper 2 in a 35-foot center console is shown here to scale. The Seakeeper occupies less than 1% of the total available space on board.





SMALL BOAT SIZING GUIDE

WHICH SEAKEEPER IS RIGHT FOR YOU?

No one knows more about how you boat than you! Check out our Small Boat Sizing Guide, enter your boat information and we will guide you through the options so you can decide which Seakeeper is right for you.

seakeeper.com/sizing-guide

Boston Whaler 380 Outrage with a Seakeeper 6

RECREATIONAL LINE

Designed for optimal performance in recreational applications, our smallest models run solely on DC battery power. No generator needed!



SEAKEEPER 2

~27-35' (8 - 10.5 meters)

up to ~7.5 tons

\$19,900



SEAKEEPER 3

~36-39' (10.5 - 12 meters)

up to ~10.5 tons

\$27,700

Dimensions	24.6 L x 25.5 W x 20.6 H (inches) 0.624 L x .647 W x .523 H (m)	26.8 L x 27.0 W x 23.3 H (inches) 0.680 L x .685 W x .592 H (m)
Weight	414 lbs (188 kg)	550 lbs (249 kg)
Rated Speed	9,000 RPM	8,450 RPM
Angular Momentum at Rated RPM	2,000 N-M-S	3,000 N-M-S
Max Anti-Rolling Torque at Rated RPM	5,249 N-M	7,854 N-M
Spool-up Time to Rated RPM	35 minutes (9,000 RPM)	50 minutes (8,450 RPM)
Spool-up Time to Stabilization	24 minutes (7,650 RPM)	36 minutes (7,185 RPM)
Spool-up Power		
AC Input	N/A	N/A
DC Input (sea state dependent)	850 Watts Max	900 Watts Max
Operating Power		
DC Input	300 - 650 Watts (12 VDC)	400 - 750 Watts (12 VDC)
AC Input Voltage (Single Phase)	N/A	N/A

RECREATIONAL LINE STATS



SEAKEEPER 5



SEAKEEPER 6



SEAKEEPER 9



SEAKEEPER 16



SEAKEEPER 18



SEAKEEPER 26



SEAKEEPER 35

For Boats
Weight
Retail Price (not including installation)

~40-45' (12 - 14 meters)
up to ~20 tons
\$38,900

~46-52' (14 - 16 meters)
up to ~24 tons
\$45,900

~50-59' (15.5 - 18 meters)
up to ~30 tons
\$77,900

~60-69' (18 - 21 meters)
up to ~50 tons
\$109,900

~65-75' (20 - 23 meters)
up to ~56 tons
\$119,900

~70-84' (21 - 25.5 meters)
up to ~75 tons
\$166,900

>85' (26 meters)
up to ~100 tons
\$216,300

Dimensions	29.8 L x 29.7 W x 24.7 H (inches) 0.756 L x 0.755 W x 0.626 H (m)	29.8 L x 29.7 W x 24.7 H (inches) 0.756 L x 0.755 W x 0.626 H (m)	33.5 L x 35.6 W x 27.9 H (inches) 0.852 L x 0.903 W x 0.708 H (m)
Weight	870 lbs (395 kg)	870 lbs (395 kg)	1,210 lbs (550 kg)
Rated Speed	8,100 RPM	9,700 RPM	9,000 RPM
Angular Momentum at Rated RPM	5,000 N-M-S	6,000 N-M-S	9,000 N-M-S
Max Anti-Rolling Torque at Rated RPM	13,075 N-M	15,690 N-M	18,810 N-M
Spool-up Time to Rated RPM	35 minutes (8,100 RPM)	40 minutes (9,700 RPM)	55 minutes (9,000 RPM)
Spool-up Time to Stabilization	22 minutes (6,885 RPM)	24 minutes (7,700 RPM)	38 minutes (7,650 RPM)
Spool-up Power			
AC Input	2300 Watts Max	2300 Watts Max	3000 Watts Max
Operating Power			
AC Input (sea state dependent)	1050 - 2300 Watts	1050 - 2300 Watts	1000 - 2000 Watts
DC Input	125 Watts (12 vdc)	125 Watts (12 vdc)	240 Watts (24 vdc)
AC Input Voltage (Single Phase)	110 - 230 VAC (+/- 10%), 50/60 Hz	110 - 230 VAC (+/- 10%), 50/60 Hz	208 - 230 VAC (+/- 10%), 50/60 Hz

Dimensions	42.1 L x 43.1 W x 33.4 H (inches) 1.069 L x 1.096 W x 0.848 H (m)	42.1 L x 43.1 W x 33.4 H (inches) 1.069 L x 1.096 W x 0.848 H (m)	52.7 L x 55.9 W x 40.4 H (inches) 1.338 L x 1.419 W x 1.023 H (m)	52.8 L x 55.9 W x 42.4 H (inches) 1.342 L x 1.419 W x 1.076 H (m)
Weight	2,195 lbs (996 kg)	2,250 lbs (1021 kg)	3,010 lbs (1,365 kg)	3,920 lbs (1,778 kg)
Rated Speed	6,130 RPM	7,000 RPM	5,000 RPM	5,150 RPM
Angular Momentum at Rated RPM	16,000 N-M-S	18,000 N-M-S	26,000 N-M-S	35,000 N-M-S
Max Anti-Rolling Torque at Rated RPM	30,720 N-M	34,980 N-M	56,000 N-M	73,000 N-M
Spool-up Time to Rated RPM	57 minutes (6,130 RPM)	55 minutes (7,000 RPM)	90 minutes (5,000 RPM)	65 minutes (5,150 RPM)
Spool-up Time to Stabilization	45 minutes (5,210 RPM)	40 minutes (5,600 RPM)	70 minutes (4,250 RPM)	45 minutes (4,380 RPM)
Spool-up Power				
AC Input	3000 Watts Max	4000 Watts Max	3000 Watts Max	5000 Watts Max
Operating Power				
AC Input (sea state dependent)	2300 - 3000 Watts	2300 - 3700 Watts	1000 - 3000 Watts	2000 - 5000 Watts
DC Input	240 Watts (24 vdc)	240 Watts (24 vdc)	240 Watts (24 vdc)	240 Watts (24 vdc)
AC Input Voltage (Single Phase)	208 - 230 VAC (+/- 10%), 50/60 Hz	208 - 230 VAC (+/- 10%), 50/60 Hz	208 - 230 VAC (+/- 10%), 50/60 Hz	208 - 230 VAC (+/- 10%), 50/60 Hz

THE **HD** LINE

Do you go out in the tough stuff? Do you use your boat more than 1,000 hours per year? Check out our Heavy Duty line optimized for rigorous use in the harshest conditions!

7 HD



BOAT SIZE RANGE ~45-54' (~14 - 16.5 meters)
BOAT WEIGHT up to ~25 tons
RETAIL PRICE \$77,900 (not including installation)
WEIGHT 1,210 lbs (550 kg)
DIMENSIONS 33.5 L x 35.6 W x 27.9 H (inches)
0.852 L x 0.903 W x 0.708 H (meters)

12 HD



BOAT SIZE RANGE ~55-64' (17-19.5 meters)
BOAT WEIGHT up to ~35 tons
RETAIL PRICE \$109,900 (not including installation)
WEIGHT 2,195 lbs (996 kg)
DIMENSIONS 42.1 L x 43.1 W x 33.4 H (inches)
1.069 L x 1.096 W x 0.848 H (meters)

20 HD



BOAT SIZE RANGE ~65-74' (~20 - 22.5 meters)
BOAT WEIGHT up to ~60 tons
RETAIL PRICE \$166,900 (not including installation)
WEIGHT 3,010 lbs (1,365 kg)
DIMENSIONS 52.7 L x 55.9 W x 40.4 H (inches)
1.338 L x 1.419 W x 1.023 H (meters)

30 HD



BOAT SIZE RANGE >75' (>23 meters)
BOAT WEIGHT up to ~85 tons
RETAIL PRICE \$216,300 (not including installation)
WEIGHT 3,920 lbs (1,778 kg)
DIMENSIONS 52.8 L x 55.9 W x 42.4 H (inches)
1.342 L x 1.419 W x 1.076 H (meters)

STUFF HAPPENS!

But that's why you have a warranty

All of Seakeeper's recreational products come with a two-year/2,000-hour complete system warranty.

View warranty details at:
seakeeper.com/extended-warranty



Register Your Seakeeper for Greater Rewards

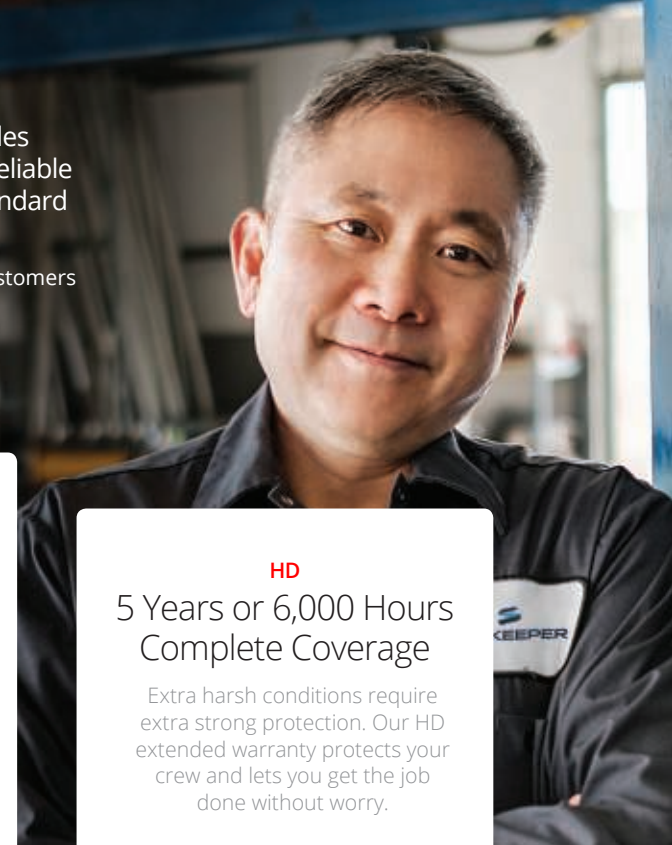
The first step to taking full advantage of any of our fabulous after-sales programs is registering your Seakeeper!

Register your Seakeeper at seakeeper.com/register

SEAKEEPER EXTENDED WARRANTY

Our extended warranty program provides you with an added peace of mind and reliable service beyond the duration of your standard factory warranty.

Extended warranty coverage is available for customers currently within their factory warranty period.



RECREATION SILVER 2-Year Extension

Is weekend boating more your speed? Our silver level extended warranty makes sure you don't run out of time before you've reached 2,000 hours.

from
\$1,351 Price shown is for
the Seakeeper 2

RECREATION GOLD 2-Year Extension + 1,000 Hours

Looking for more coverage all around? Our gold level extended warranty is the best value, so you can focus on doing what you love.

from
\$1,930 Price shown is for
the Seakeeper 2

HD 5 Years or 6,000 Hours Complete Coverage

Extra harsh conditions require extra strong protection. Our HD extended warranty protects your crew and lets you get the job done without worry.

from
\$10,965 Price shown is for
the Seakeeper 7HD

View all pricing and full policies at seakeeper.com/extended-warranty.




UNRIVALED SUPPORT

Our certified Dealers are ready to assist with all your service and refit needs around the world.



Interested in becoming a Dealer?

Learn more at seakeeper.com/contact

-  Seakeeper Office Locations
-  Exclusive Distributors
-  Dealers

A NETWORK THAT WORKS FOR YOU

With certified sales and service personnel across the globe, there's always a helping hand nearby when you need it. Whether you're considering a refit, scheduling annual maintenance or are experiencing a technical issue, Seakeeper's support network has you covered.



TECHNICAL SUPPORT

+1-240-718-6440

We stand behind our product with a global support network and a 24/7 technical support hotline.



MAINTENANCE MAKES THE MAGIC HAPPEN

All equipment needs a little regular care to keep it working in tip-top shape - even the magical kind like Seakeeper! Here's what we recommend keeping up with:

Brake System	Task	Running Hours	Period
Hydraulic Oil Flush	Change	1000	Annually
Brake Bushings	Inspect	1000	Annually
Brake Bushings	Replace	2000/As Needed	----
Hydraulic Cylinders & Hoses	Inspect	1000	Annually
Hydraulic Accumulators	Inspect/Replace	1000/2000	Annually
Cooling System			
Zinc Anode	Inspect/Replace	150	3 Months
Heat Exchanger	Inspect/Replace	1000/2000	Annually
Coolant Level - Glycol	Inspect/Fill	1000	Annually
Clean/Descale Heat Exchanger	Inspect/Clean	1000	Annually
Cooling Hose	Inspect	1000	Annually
Cooling system Flush - Glycol	Inspect/Replace	1000	Annually
Electronics System			
Inspection of all electrical connections, cables, and components	Inspect	----	Annually
Mechanical & Foundational System			
Inspect all mounting hardware/bolts	Inspect	1000	Annually
Inspect isolation bushings, pins, and clips	Inspect	1000	Annually
Clevis assemblies (4), hardware, isolation bushings, pins & clips	Inspect/Replace	1000	----

Recommended Maintenance should be performed by a certified Seakeeper Dealer or Seakeeper factory technician. Find a local Dealer at www.seakeeper.com/find-us

ONCE YOU FEEL IT, YOU'LL NEVER BOAT WITHOUT IT.

We've heard thousands of "wows" as people have experienced Seakeeper for the first time. We have no doubt that you'll believe it too - once you feel it. So, what are you waiting for? Schedule your Seakeeper demo today!

VISIT
SEAKEEPER.COM
TO SCHEDULE A DEMO &
FIND A SALES REP NEAR YOU

